

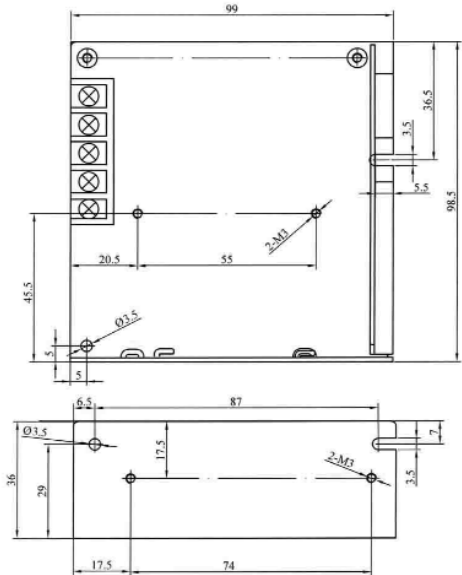


### 25W SWITCHING POWER SUPPLY CLOSED FRAME



- Universal Input 85 to 264VAC.
- Low Power Consumption.
- Approvals: UL / CUL / TUV / CB / CE.
- Protections: Over Load / Over Voltage / Short Circuit.
- 100% Full Load High Temperature Burn-in Test.
- 2 Years Warranty.

Input Voltage Range: 85~264VAC  
 Input Frequency: 47~63Hz  
 Output Adjustment Range:  $\pm 10\%$  Rated Output Voltage  
 Line Regulation:  $\leq 0.5\%$



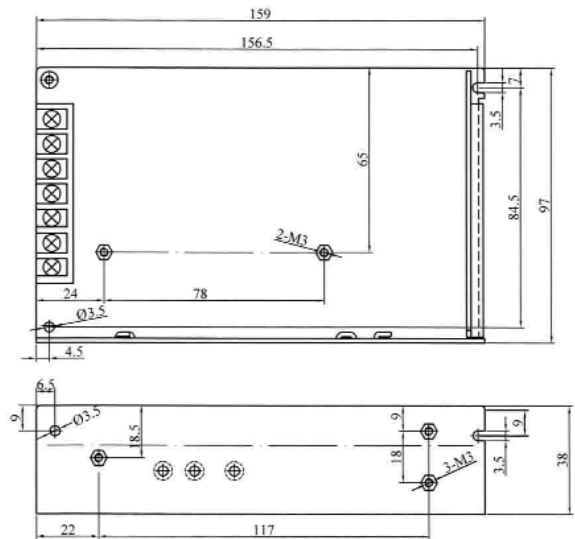
Part No.	DC output	Load regul.	Efficiency
<b>67-0525-1</b>	5V, 0~5A	1%	73%
<b>67-1225-1</b>	12V, 0~2.1A	0.5%	77%
<b>67-2425-1</b>	24V, 0~1.1A	0.5%	77%

### 60W SWITCHING POWER SUPPLY CLOSED FRAME



- Universal Input 85 to 264VAC.
- Low Power Consumption.
- Approvals: UL / CUL / TUV / CB / CE.
- Protections: Over Load / Over Voltage / Short Circuit.
- 100% Full Load High Temperature Burn-in Test.
- 2 Years Warranty.

Input Voltage Range: 85~264VAC  
 Input Frequency: 47~63Hz  
 Output Adjustment Range:  $\pm 10\%$  Rated Output Voltage  
 Line Regulation:  $\leq 0.5\%$



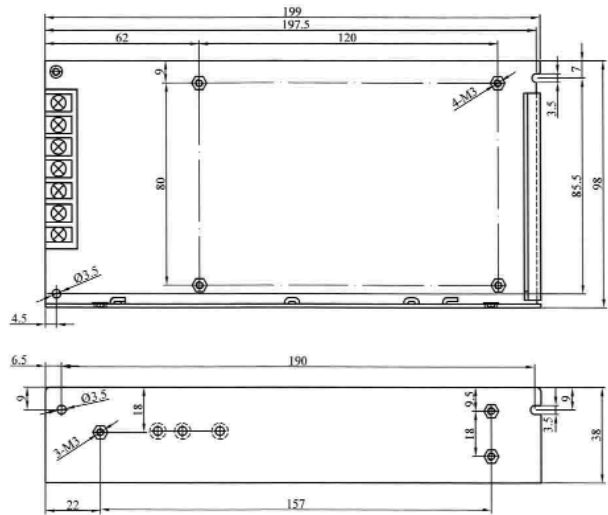
Part No.	DC output	Load regul.	Efficiency
<b>67-0560-1</b>	5V, 0~12A	1%	73%
<b>67-1260-1</b>	12V, 0~5A	1%	77%
<b>67-1560-1</b>	15V, 0~4A	0.5%	78%
<b>67-2460-1</b>	24V, 0~2.5A	0.5%	81%

## 100W SWITCHING POWER SUPPLY - CLOSED FRAME



- AC Input Range Selectable by Switch.
- Low Power Consumption.
- Approvals: UL / CUL / TUV / CB / CE.
- Protections: Over Load / Over Voltage / Short Circuit.
- 100% Full Load High Temperature Burn-in Test.
- 2 Years Warranty.

Input Voltage Range: 88~132VAC (Selectable by Switch)  
 Input Frequency: 47~63Hz  
 Output Adjustment Range:  $\pm 10\%$  Rated Output Voltage  
 Line Regulation:  $\leq 0.5\%$



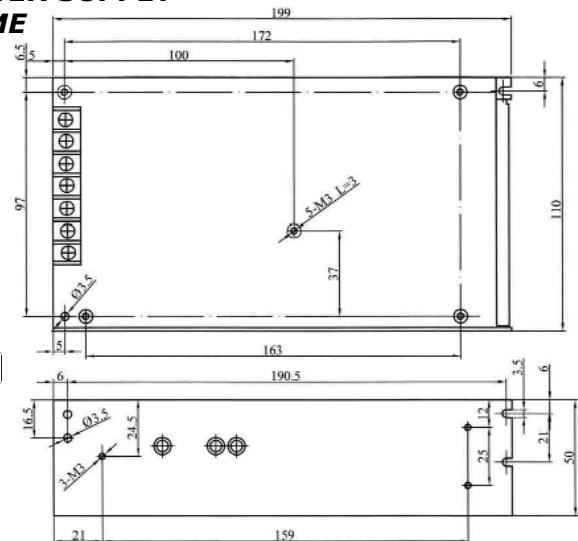
Part No.	DC output	Load regul.	Efficiency
<b>67-0510-1</b>	5V, 0~20A	1%	77%
<b>67-0710-1</b>	7.5V, 0~13.5A	1%	79%
<b>67-1210-1</b>	12V, 0~8.3A	0.5%	81%
<b>67-1510-1</b>	15V, 0~6.8A	0.5%	82%
<b>67-2410-1</b>	24V, 0~4.2A	0.5%	84%
<b>67-4810-1</b>	48V, 0~2.2A	0.5%	85%

## 150W SWITCHING POWER SUPPLY CLOSED FRAME



- AC Input Range Selectable by Switch.
- Low Power Consumption.
- Approvals: UL / CUL / TUV / CB / CE.
- Protections: Over Load / Over Voltage / Short Circuit.
- 100% Full Load High Temperature Burn-in Test.
- 2 Years Warranty.

Input Voltage Range: 85~264VAC (Selectable by Switch)  
 Input Frequency: 47~63Hz  
 Output Adjustment Range:  $\pm 10\%$  Rated Output Voltage  
 Line Regulation:  $\leq 0.5\%$



Part No.	DC output	Load regul.	Efficiency
<b>67-0515-1</b>	5V, 0~30A	1%	78%
<b>67-0715-1</b>	7.5V, 0~20A	1%	80%
<b>67-0915-1</b>	9V, 0~16.5A	1%	80%
<b>67-1215-1</b>	12V, 0~12.5A	0.5%	82%
<b>67-4815-1</b>	48V, 0~3.1A	0.5%	87%