

## CATEGORY 5 PLUGS (8P/8C)

For round jacket/solid conductor cable.



**13-101-0** \* 30μ" Gold  
**13-102-0** \* 50μ" Gold  
 Use -5 for Display Package  
 \* Use -50 for 50 Packs

## CATEGORY 5e KEYSTONE JACK



This jack requires no tooling. A color coded lift-up lid is used to place and insert the wires.



**13-111E-0** 5e white color  
 Use -1 for Display Package

## CATEGORY 5e KEYSTONE JACK



Standard 110 type IDC strips.



**13-112E-0** 5e white color  
 Use -1 for Display Package

## SINGLE SURFACE MOUNT BOX



Single outlet surface mount box for 13-111-0 or 13-112-0 series jacks.

**13-121-0** White  
 Use -1 for Display Package

## DOUBLE SURFACE MOUNT BOX



Double outlet surface mount box for 13-111-0 or 13-112-0 series jacks.

**13-122-0** White  
 Use -1 for Display Package

## FLUSH MOUNT WALL PLATES



White flush mount wall plates for 13-111-0 or 13-112-0 series jacks.

**13-131-0** for 1 jack - White  
**13-132-0** for 2 jacks - White  
**13-134-0** for 4 jacks - White  
 Use -1 for Display Package

## TV/PHONE PLATE



**13-135WH-0** White  
 Use -1 for Display Package

## S VIDEO INSERT



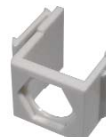
**13-143WH-0** White  
 Use -1 for Display Package

## INSERTS FOR SURFACE MOUNT PLATES



Blank Insert-White

**13-140-0** Bulk  
**13-140-2** Pkg (2)



ST Insert-White

**13-141-0** Bulk  
**13-141-2** Pkg (2)

See 24-182R-0 RCA jacks designed to fit 13-141-0 (Page 14)



BNC Insert-White

**13-142-0** Bulk  
**13-142-1** Pkg

**MODE ELECTRONICS LTD.**  
**6830 BURLINGTON AVE.,**  
**BURNABY, B.C., CANADA, V5J 4H1**  
**Phone: 604-435-6633**  
**Fax: 604-435-8890**  
**Toll Free: 1-800-663-4992**  
**Web Site: www.mode-elec.com**

**PATCH CORDS**



Category 5e patch cords - available in 3', 7', 10', 14', and 25' lengths - colors - blue, yellow & grey.

- 13-161BL-0** 3' Long Blue
- 13-161GY-0** 3' Long Grey
- 13-162BL-0** 7' Long Blue
- 13-162GY-0** 7' Long Grey
- 13-162YL-0** 7' Long Yellow
- 13-163GY-0** 10' Long Grey
- 13-164BL-0** 14' Long Blue
- 13-164GY-0** 14' Long Grey
- 13-164YL-0** 14' Long Yellow
- 13-165GY-0** 25' Long Grey
- 13-165YL-0** 25' Long Yellow

Use -1 for Display Package

**CAT6 PATCH CORDS**



Available in 3', 7', 10', 14', and lengths. Color is grey.

- 13-171GY-0** 3' Long
- 13-172GY-0** 7' Long
- 13-173GY-0** 10' Long
- 13-174GY-0** 14' Long

Use -1 for Display Package

**COLOR CODED CABLE BOOTS**



- 13-190BK-0** Black
- 13-190BL-0** Blue
- 13-190GR-0** Green
- 13-190GY-0** Grey
- 13-190RD-0** Red
- 13-190YL-0** Yellow

Use -4 for Display Package

Since modern twisted pair cabling must be expected to carry high signal rates, it is necessary to avoid stressing the wire. Tight 90-degree bends are not permissible, and any tie-wraps or other securing straps must not be cinched excessively tight. Care should be taken to avoid routing cables within 18 inches of electrical noise generating devices such as transformers and lighting ballasts. Please see our selection of hook and loop cable ties which are suitable for securing bundles of Cat 5 or Cat 5E cables.

**CATEGORY 5 TOOLING**



**13-180-0** Bulk **13-180-1** Pkg.  
Adjustable impact punch tool - using one of the inserts (below) this tool will insert and trim wires for the 13-112-0 & 13-113-0 keystone jacks.

**13-186-1** Pkg.  
Adjustable impact punch tool c/w 13-183-0 insert. Attractive display Package.



**13-181-0** Bulk **13-181-1** Pkg.  
Non-impact punch tool - using one of the inserts (below) this tool will insert and trim wires for the 13-112-0 & 13-113-0 keystone jacks.

**13-187-1** Pkg.  
Non-impact punch tool c/w 13-183-0 insert. Attractive display package.

**INSERTS FOR 13-180-0 AND 13-181-0 PUNCH TOOL**



**13-182-0**  
For 66 type terminals- reversible punch or punch & cut



**13-183-0**  
For 110 type terminals-reversible punch or punch & cut



**13-184-0**  
For 66 & 110/88 type terminals. Punch only

Use -1 for Display Package

**CABLE STRIP TOOL**



**13-185-0**  
Universal stripping tool for round or flat Cat 5 cable. Use -1 for Display Package

**ECONOMY PUNCH-DOWN TOOL AND CABLE STRIPPER**



**13-189-0**  
Disposable punch-down tool. Suitable for 5-6mm OD UTP/STP cable. For 110 type blocks. Use -1 for Display Package

The Category 5 products shown on pages 5 and 6 are stocked items. We have access to many additional items such as patch panels, different styles of outlet boxes, etc. If you have a requirement for an item or items not shown on these pages, please contact us or your local Mode Distributor for price and delivery information.