



24-100-0 Bulk
24-100-2 Pkg (2)

Metal body RCA plug. Maximum cable dia. 7.5mm



24-180-0 Bulk
24-180-2 Pkg (2)

Chassis mount RCA jack. 6mm mounting hole.



24-104-0 Bulk
24-104-2 Pkg (2)

Metal plug with strain relief. Maximum cable dia. 4.5mm



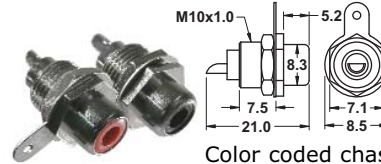
24-181-0 Bulk
24-181-2 Pkg (2)

Gold plated chassis RCA jack. 6mm mounting hole.



24-105-0 RG59/u
24-105-1 Pkg
24-106-0 RG6/u
24-106-1 Pkg

Use 84-156-1 tool for installation



24-182R-0 Red Bulk

Color coded chassis RCA jack. 8mm mtg hole.



24-101-0 Black
24-102-0 Red
24-109-4 Pkg (4)

Colored plastic body RCA plugs. Max. cable dia. 4.5mm.



24-183B-0 Black Bulk
24-183R-0 Red Bulk
24-183-2 Pkg (2)

Gold Plated Color coded isolated chassis RCA jack. 8mm mtg hole.

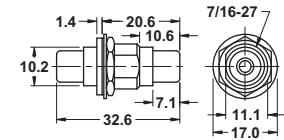


24-111-0 Black
24-112-0 Red
24-113-4 Pkg (4)

Colored plastic with strain relief. Max. cable dia. 4.5mm



24-184-0 Bulk
24-184-1 Pkg



Bulkhead RCA joiner. Jack to jack.



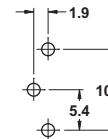
24-114-0 Bulk
24-114-2 Pkg (2)

Black plastic right angle RCA plug. Max. cable dia. 5.1mm



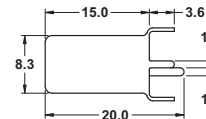
24-191-0 Bulk
24-191-2 Pkg (2)

PC mount RCA jack



24-116-0 Bulk
24-116-2 Pkg (2)

Crimp RCA plug for RG59/u



24-192-0 Bulk
24-192-2 Pkg (2)

PC mount RCA jack



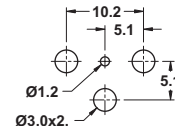
24-120-0 Bulk
24-120-1 Pkg

Gold plated plug with spring strain relief. Cable dia 5.5mm



24-195-0 Bulk
24-195-2 Pkg (2)

Right angle PC mount RCA jack



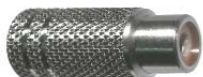
24-121-0 Black
24-122-0 Red
24-123-2 Pkg (2)

Color coded gold plated plugs. Max. cable dia. 5.0mm



24-124-0 Black
24-125-0 Red
24-126-2 Pkg (2)

Color coded gold plated plugs. Max cable dia. 6.0mm



24-150-0 Bulk
24-150-2 Pkg (2)

Metal body RCA jack. Max. cable dia. 7.5mm

Special Order Products
If you have a requirement for items not shown in this Catalog, please contact Mode or your local Distributor and we would be pleased to find an economical source.

Dimensions shown for plugs and jacks are lengths and diameters of the plug body (without S/R). Cable diameter dimension is maximum cable size.

2.5mm PLUGS



24-200-0 Bulk
24-200-2 Pkg (2)

Mono plug 25mm long x 9mm dia. Cable dia. 6mm



24-203-0 Bulk
24-203-2 Pkg (2)

Mono plug 24mm x 10mm dia. Cable diameter 4mm



24-211-0 Bulk
24-211-2 Pkg (2)

Mono plug 19 x 8mm dia. Cable diameter 4mm



24-221-0 Bulk
24-221-1 Pkg

Stereo plug 23mm x 8mm dia. Cable diameter 4mm



24-223-0 Bulk
24-223-1 Pkg

Stereo plug 24mm x 10mm dia. Cable diameter 4mm

2.5mm JACKS



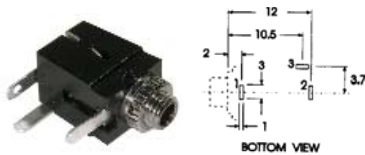
24-271-0 Bulk
24-271-2 Pkg (2)

Inline **stereo** jack Black color. 26mm L x 11mm dia. Cable dia. 5mm



24-281-0 Bulk
24-281-4 Pkg (4)

Mono chassis jack (closed circuit). 4mm mtg. hole



24-285-0 Bulk
24-285-2 Pkg (2)

Mono PC jack C.C. 7.7mm W x 8.5mm H x 10mm D. 4mm mtg. hole



24-287-0 Bulk
24-287-2 Pkg (2)

Mono chassis jack. 8mm W x 9.6mm H x 8mm D. 4mm mtg. hole



24-288-0 Bulk
24-288-2 Pkg (2)

Stereo chassis jack. 8mm W x 9.6mm H x 8mm D. 4mm mtg. hole

3.5mm PLUGS



24-300-0 Bulk
24-300-2 Pkg (2)

Metal **mono** plug 25 x 9mm dia. Cable dia. 6.5mm



24-301-0 Bulk
24-301-2 Pkg (2)

Mono plug 25 x 10mm diameter. Cable dia. 5mm



24-303-0 Bulk
24-303-2 Pkg (2)

Mono plug 24 x 10mm dia. Cable dia. 4mm



24-304-0 Bulk
24-304-2 Pkg (2)

Metal **mono** plug 26 x 9mm dia. Cable dia. 4.5mm



24-310-0 Bulk
24-310-2 Pkg (2)

3.5mm **mono** right angle plug. Cable diameter 6.75mm



24-319-0 Bulk
24-319-2 Pkg (2)

3.5mm **stereo** right angle plug. Cable diameter 6.75mm



24-320-0 Bulk
24-320-2 Pkg (2)

Metal **stereo** plug. 25mm x 9mm dia. Cable dia. 6.5mm



24-321-0 Bulk
24-321-2 Pkg (2)

Black plastic **stereo** plug. 25 x 10mm dia. Cable 6mm dia.



24-322-0 Bulk
24-322-2 Pkg (2)

Metal **stereo** plug. 25 x 9mm dia. Cable dia. 4.5mm



24-323-0 Bulk
24-323-2 Pkg (2)

Black plastic **stereo** plug. 52 x 10mm dia. Cable dia. 4mm

Visit our Web Site at
<http://www.mode-elec.com>

3.5mm JACKS



24-351-0 Bulk
24-351-2 Pkg (2)

Black mono jack. 35 x 9mm dia. Cable dia. 6mm



24-353-0 Bulk
24-353-2 Pkg (2)

Metal mono jack. 34 x 10mm dia. Cable dia. 4.5mm



24-354-0 Bulk
24-354-2 Pkg (2)

Black plastic mono jack. 34 x 11mm dia. Cable dia. 4.0mm



24-371-0 Bulk
24-371-1 Pkg

Black plastic stereo jack. 34 x 11mm dia. Cable dia. 4.5mm



24-372-0 Bulk
24-372-2 Pkg (2)

Metal stereo jack. 34 x 10mm dia. Cable dia. 6mm



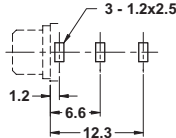
24-373-0 Bulk
24-373-2 Pkg (2)

Metal stereo jack. 34 x 10mm dia. Cable dia. 4.5mm



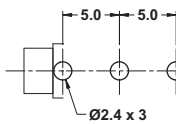
Closed circuit mono chassis jack. Mtg. hole 6mm dia.

24-381-0 Bulk
24-381-4 Pkg (4)



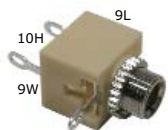
24-383-0 Bulk
24-383-2 Pkg (2)

Mono chassis jack (PC mount also) Mounting hole 6mm diameter.



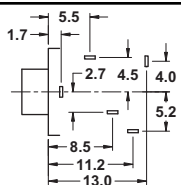
24-386-0 Bulk
24-386-2 Pkg (2)

PC mount mono closed circuit jack.



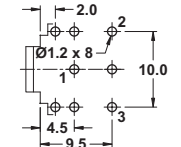
Mono closed circuit chassis jack. 6mm mtg. hole

24-387-0 Bulk
24-387-2 Pkg (2)



24-391-0 Bulk
24-391-1 Pkg

Stereo PC mount jack with 2 normally closed switches. 6mm mtg.



24-392-0 Bulk
24-392-1 Pkg

Stereo PC mount jack.

1/4" PLUGS



24-600-0 Bulk
24-600-1 Pkg

Metal mono plug. 33 x 12mm dia. Cable dia. 8mm



24-601-0 Bulk
24-601-1 Pkg

Black plastic mono plug. 40 x 13mm dia. Cable dia. 8mm



24-603-0 Bulk
24-603-1 Pkg

Mono plug with strain relief. 38 x 13mm dia. Cable dia. 6mm



24-604-0 Bulk
24-604-1 Pkg

Metal mono plug with spring strain relief. 32 x 12mm dia. Cable dia. 6mm



24-610-0 Bulk
24-610-1 Pkg

Metal right angle mono plug



24-618-0 Bulk
24-618-1 Pkg

Metal right angle stereo plug



24-620-0 Bulk
24-620-1 Pkg

Metal stereo plug. 33 x 12mm dia. Cable dia. 8mm



24-621-0 Bulk
24-621-1 Pkg

Plastic stereo plug. 40 x 13mm dia. Cable dia. 7.5mm



24-622-0 Bulk
24-622-1 Pkg

Metal stereo plug with spring strain relief. 32 x 12mm dia. Cable dia. 6mm



24-623-0 Bulk
24-623-1 Pkg

Stereo plug with strain relief. 37 x 13mm dia. Cable dia. 6mm

Visit our Web Site at
<http://www.mode-elec.com>

MINI DIN CONNECTORS

INLINE JACKS



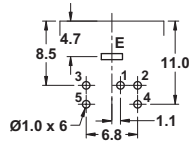
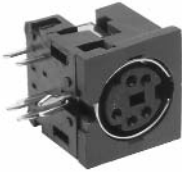
26-140-0 4-position
26-160-0 6-position
26-180-0 8-position
Use -1 for Display Pkg.

INLINE PLUGS



26-240-0 4-position
26-250-0 5-position
26-260-0 6-position
26-280-0 8-position
Use -1 for Display Pkg.

PC MOUNT MINI DIN JACKS



26-350-0 5-position
Use -1 for Display Pkg.

MICROPHONE CONNECTORS



25-513-0 3-pos jack
25-513-1 Pkg



25-515-0 5-pos jack
25-515-1 Pkg



25-523-0 3-pos plug
25-523-1 Pkg



25-525-0 5-pos plug
25-525-1 Pkg



25-533-0 3-pos. jack
25-533-1 Pkg

25-535-0 5-pos. jack
25-535-1 Pkg



25-543-0 3-pos. plug
25-543-1 Pkg

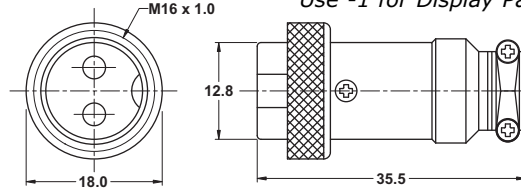
25-545-0 5-pos. plug
25-545-1 Pkg



INLINE PLUGS



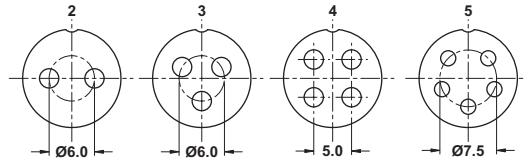
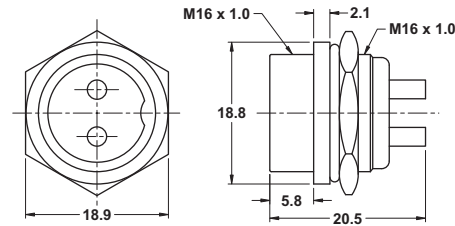
25-722-0 2-position
25-723-0 3-position
25-724-0 4-position
25-725-0 5-position
25-726-0 6-position
25-728-0 8-position
Use -1 for Display Package



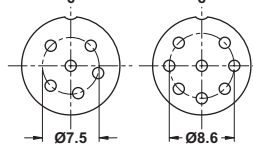
CHASSIS JACKS



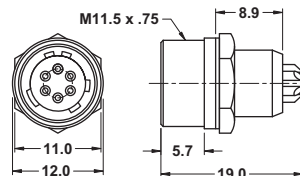
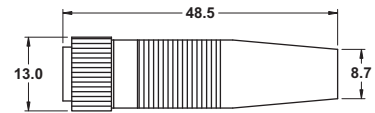
25-732-0 2-position
25-733-0 3-position
25-734-0 4-position
25-735-0 5-position
25-736-0 6-position
25-738-0 8-position
Use -1 for Display Package



Pin Layout



PRECISION MINIATURE CONNECTOR



This miniature precision six contact connector features gold plated contacts, threaded locking ring and precision fit and finish.

25-746-0 6-position plug
25-746-1 Display Package
25-756-0 6-position jack
25-756-1 Display Package