

## UHF CONNECTORS

### UHF SPECIFICATIONS

#### MATERIALS:

Body : Brass  
 Contacts: Nickel plated brass  
 Dielectric: Delrin

#### ELECTRICAL:

Nominal Impedance: Non constant  
 Frequency Range: 0-500MHz  
 Voltage Rating: 500VAC  
 Withstanding Voltage: 1000V RMS  
 Insulation Resistance: 5000MΩ min.



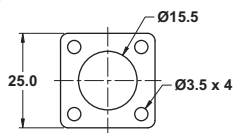
### UHF CHASSIS JACK

**21-238-0** Bulk Package  
**21-238-1** Bulk Package



### UHF CHASSIS JACK

**21-239-0** Bulk Package  
**21-239-1** Bulk Package



### UHF STANDARD PLUG



For RG8/u - use reducing adapters below for RG58 or 59

**21-259-0** Bulk Package  
**21-259-1** Bulk Package

### UHF REDUCING ADAPTER



**21-260-0** RG58/u  
**21-261-0** RG59/u  
 Use -2 for Display Package

### MALE UHF JOINER



**21-266-0** Bulk Package  
**21-266-1** Bulk Package

### UHF BULKHEAD MOUNT



50mm long with mtg. nuts  
**21-267-0** Bulk Package  
**21-267-1** Bulk Package

### FEMALE UHF JOINER



**21-268-0** Bulk Package  
**21-268-1** Bulk Package

### UHF RIGHT ANGLE



**21-269-0** Bulk Package  
**21-269-1** Bulk Package

## BNC CONNECTORS

### BNC SPECIFICATIONS

#### MATERIALS:

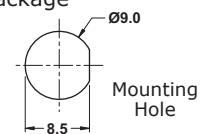
Body: Nickel plated brass  
 Contacts: Gold plated brass or phosphor bronze  
 Dielectric: Delrin

#### ELECTRICAL:

Nominal Impedance: 50Ω (75Ω)  
 Frequency range: 0-4 GHz  
 Voltage rating: 500VAC  
 Withstanding voltage: 1500V RMS  
 Insulation resistance: 5000MΩ min.

### ISOLATED CHASSIS JACK

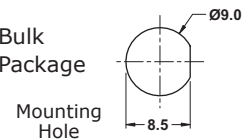
**21-337-0** Bulk Package  
**21-337-1** Bulk Package



### CHASSIS JACK



**21-338-0** Bulk Package  
**21-338-1** Bulk Package



### CRIMP PLUG



**21-344-0** RG174/u 50Ω  
**21-346-0** RG6/u 50Ω  
**21-348-0** RG58/u 50Ω  
**21-349-0** RG59/u 75Ω  
 Use -1 for Display Package

### CRIMP JACK



**21-350-0** Bulk Package  
**21-350-1** Bulk Package  
 for RG58/u

### BNC TERMINATORS



**21-351-0** 50Ω  
**21-352-0** 75Ω  
 Use -1 for Display Package

### TWIST-ON PLUG



**21-353-0** RG58/u  
 Use -1 for Display Package

### COMPRESSION CONNECTORS



Use 84-156-1 tool for installation

**21-355-0** RG59/u  
**21-356-0** RG6/u  
 Use -1 for Display Package

**BNC Connectors continued on next page**